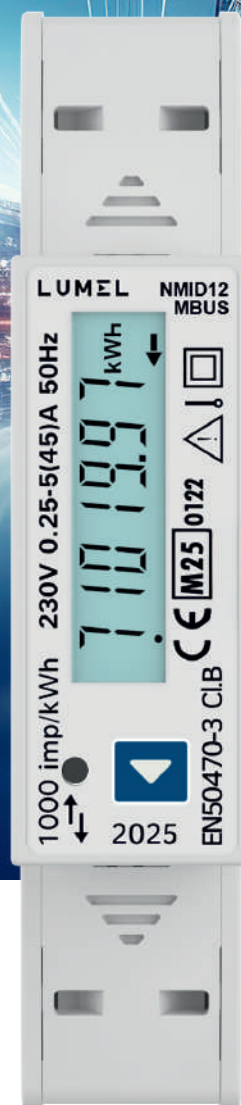


LUMEL



CE

# NMID12MBUS

SINGLE-PHASE DIN RAIL  
AC ENERGY METER 45A

(MID CERTIFIED)

# NMID12MBUS

SINGLE-PHASE DIN RAIL ENERGY METER



## Overview:

NMID12MBUS is a modern Single Phase Direct Connected AC Energy Meter designed for intended use in residential, commercial and light industrial Electrical Energy Metering. The meter is engineered using advanced microcontroller technology and is suitable for electrical parameter measurement and monitoring in 1 Phase 2 Wire Networks. It supports maximum 45 A current measurement on direct connection. It supports Tariff Counters selectable via MBUS Communication. It displays parameters on bright LCD and also has Pulse Output and Impulse LED for energy monitoring. It has inbuilt industry standard MBUS for remote monitoring. Meter housing is standard Din Rail Mount that allows ease of installation.

## FEATURES

### Direct Connection Meter:

The meter can safely measure 45 A maximum current on direct connection, eliminating the use of expensive external CT for high current networks. Meter is also self-powered thus offer simplified connections.

### Measured Electrical Parameters:

The meter is primarily for bidirectional Active, Reactive and Apparent Energy measurement but it also accurately measures important electrical parameters like Voltage, Current, Frequency, Active, Reactive and Apparent Power, and Power Factor in Single Phase Networks. The measured parameters can be viewed on display and MBUS for remote viewing.

### Demand:

The Demand parameter for Active Power (Import/Export), Reactive Power (Import/Export), Apparent Power and Current are calculated as per configurable Demand Integration time.

### Pulse Output:

The meter has one optional opto-isolated potential free pulse output that can be configured for any one of the Active (Import/Export), Reactive (Import/Export) and Apparent Energy parameter. The pulse width and rate of pulse out is onsite programmable.

### Impulse LED:

The meter has Impulse LED which flash at rate of 1000 impulse per 1 kWh indicating the Active Energy consumption.

### LCD:

The LCD has bold seven segment digits with bright white backlit for display of measurement parameters. Measurement screen can be set as automatic scrolling or manual scrolling.

### Front Key:

One key is provided for easy navigation and accessibility of different parameters.

### Remote Communication:

The meter provides optional communication based on MBUS protocol for remote data acquisition of measurement data and configuration. MBUS parameters are Baud rate, device address and parity-stop bits are programmable

### Dual tariff:

The meter has Tariff Counters for energy accumulation which are selectable via MBUS Communication. Energy for tariff are Active Energy (Import/Export/Total), Reactive Energy (Import/Export/Total) and Apparent Energy.

### Compliance to Standards:

National / International Standards are complied

Accuracy Standard: EN50470-3 :2022

IEC62053-21

IP for water & dust:

IEC 60529

Plastic Flammability Standard:

UL 94

Safety Standard:

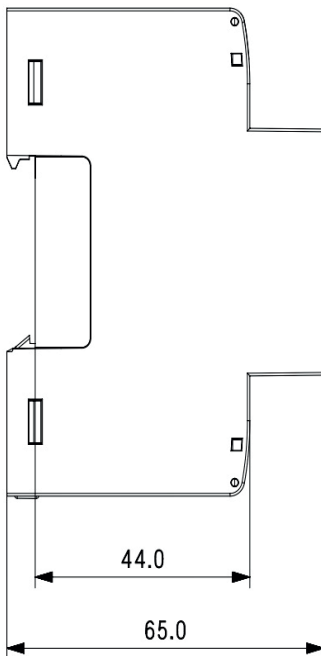
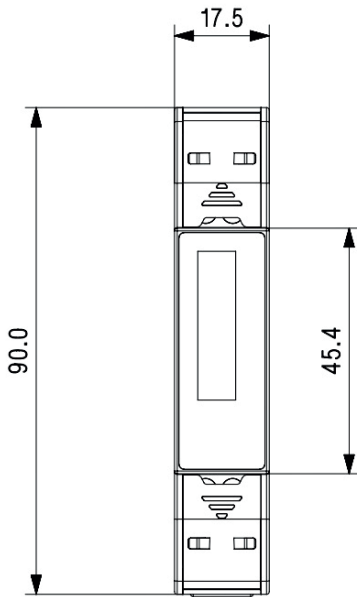
62052-31:2015

# NMID12MBUS

SINGLE-PHASE DIN RAIL ENERGY METER

LUMEL

## Dimensions Details:



## TECHNICAL DATA

### Input:

Nominal Voltage ( $U_n$ )	230 VLN
Operating Voltage Range	193 - 253 VLN
Power consumption in Voltage Circuit	< 2 W (10 VA)
Starting Current ( $I_{st} = 0.04 \cdot I_n$ )	20 mA
Minimum Current ( $I_{min} = 0.5 \cdot I_{tr}$ )	250 mA
Transitional Current ( $I_{tr}$ )	0.5 A
Nominal Current ( $I_{ref} = 10 \cdot I_n$ )	5 A
Maximum Current ( $I_{max} = 90 \cdot I_{tr}$ )	45 A
Operating Current Range	0.25-5 A (45 A)
Short time Over-current	$30 \cdot I_{max}$ for one half-cycle at 50 Hz
Power consumption in Current Circuit	<1 VA per phase
Nominal Frequency	50 Hz

### Auxiliary Supply:

Type	Self Powered
------	--------------

### Reference Conditions for Accuracy:

Reference Temperature	$23^\circ\text{C} \pm 2^\circ\text{C}$
Input Voltage	$U_n \pm 1\%$
Input Waveform	Sinusoidal (distortion factor <2%)
Input Frequency	$50 \text{ Hz} \pm 0.3\%$

### Accuracy:

Active Energy (Import/Export)	Class B as per EN50470-3 : 2022 Class 1 as per IEC 62053-21
Reactive Energy (Import/Export)	$\pm 2\%$
Apparent Energy	$\pm 1.0 \%$
Voltage	$\pm 0.5\%$ of of range max
Current	$\pm 0.5\%$ of Nominal value
Frequency	$\pm 0.2\%$ of Mid frequency
Active Power	$\pm 1\%$ of range max
Reactive Power	$\pm 1\%$ of range max
Apparent Power	$\pm 1\%$ of range max
Power Factor	$\pm 1.0 \%$

### Pulse Output:

So1	Passive Opto-isolated
Contact Range	5-27V DC, 27 mA DC (max)
Pulse Duration	60,100,200 millisecond
Pulse Rate	1,10,100,1000 pulse per kWh/kVARh/kVAh

### Impulse LED:

Impulse Rate	1000 pulse per kWh
--------------	--------------------

# NMID12MBUS

SINGLE-PHASE DIN RAIL ENERGY METER

LUMEL

## Dimensions Details:



- 1- Neutral IN
- 2- Neutral Out
- 3- L-In
- 4- L-Out
- 5,6 Pulse Output Terminal
- 7,8 Mbus Terminal

## TECHNICAL DATA

### Communication Interface(MBUS):

Protocol	EN13757-3 MBUS
Baudrate	0.3/ 0.6/ 1.2/ 2.4/ 4.8/ 9.6 kbps
Data Width	8
Parity - Stop Bits	Even -1
Address	1 .... 250

### Display Ranges:

Active Energy	0.01-99999.99 kWh & Autoranging further
Reactive Energy	0.01-99999.99 kVARh & Autoranging further
Apparent Energy	0.01-99999.99 kVAh & Autoranging further
Active Power	0-99999 W
Reactive Power	0-99999 VAR
Apparent Power	0-99999 VA

### Installation:

Installation	Indoor
Enclosure	IP51(front side) & IP20(terminal side) (IEC 60529: 2001)
Housing	1 Module DIN 43880
Dimensions	17.5 mm X 90 mm X 65 mm
Weight	150 gm
Mounting	35 mm DIN Rail

### Safety:

Safety Standard	According to 62052-31:2015
Installation Category	III
Protective Class	II
High Voltage Test	4 kV AC, 50Hz for 1 minute between all electrical circuits
Impulse Voltage Withstand	6.0 kV (1.2 microsecond waveform)
Pollution Degree	2
Housing Flame Resistance	Flammability Class V-0 acc. to UL 94, Self Extinguishing, Non Dripping, free of Halogen

### Environmental Conditions:

Mechanical Environment	M1
Electromagnetic Environment	E2
Operating Temperature	-25°C to +55°C
Storage/Transport Temperature	-40°C to +70°C
Relative Humidity	0... 95% (Non Condensing)
Shock	Half sine wave, peak acceleration 30g <sub>n</sub> (300 m/s <sup>2</sup> ), pulse duration 18msec
Vibration	10...150Hz, f<60 Hz 0.075mm constant amplitude, f>60Hz 1g <sub>n</sub> constant acceleration, 10 sweep cycles per axis
Altitude	< 2000 m max

### Wiring Guidelines:

Current Input Wire Size	2.5 -10 mm <sup>2</sup> (use insulated pin type lug)
Current/Voltage Tightening Torque	0.5 - 1.2 Nm
MBUS, SO, Wire Size	1 to 2.5 mm <sup>2</sup> (Solid/Stranded with insulated pin type lug)
MBUS, SO, Tightening Torque	0.4 Nm

# NMID12MBUS

SINGLE-PHASE DIN RAIL ENERGY METER



## Measured Parameter:

✓ : Available

✗ : Not Available

Sr No	Parameters	1 Phase 2 Wire
1.	Import Active Energy	✓
2.	Export Active Energy	✓
3.	Total Active Energy	✓
4.	Import Reactive Energy	✓
5.	Export Reactive Energy	✓
6.	Total Reactive Energy	✓
7.	Total Apparent Energy	✓
8.	Tariff 1 Import Active Energy	✓
9.	Tariff 1 Export Active Energy	✓
10.	Tariff 1 Total Active Energy	✓
11.	Tariff 1 Import Reactive Energy	✓
12.	Tariff 1 Export Reactive Energy	✓
13.	Tariff 1 Total Reactive Energy	✓
14.	Tariff 1 Total Apparent Energy	✓
15.	Tariff 2 Import Active Energy	✓
16.	Tariff 2 Export Active Energy	✓
17.	Tariff 2 Total Active Energy	✓
18.	Tariff 2 Import Reactive Energy	✓
19.	Tariff 2 Export Reactive Energy	✓
20.	Tariff 2 Total Reactive Energy	✓
21.	Tariff 2 Total Apparent Energy	✓
22.	Partial Import Active Energy	✓
23.	Partial Export Active Energy	✓
24.	Partial Total Active Energy	✓
25.	Partial Import Reactive Energy	✓
26.	Partial Export Reactive Energy	✓
27.	Partial Total Reactive Energy	✓
28.	Partial Total Apparent Energy	✓
29.	Max Import kVA Demand	✓
30.	Max Current Demand	✓
31.	Max Export kVA Demand	✓
32.	Max Import kW Demand	✓
33.	Max Export kW Demand	✓
34.	Max Import kVAR Demand	✓
35.	Max Export kVAR Demand	✓
36.	Voltage	✓
37.	Current	✓
38.	Frequency	✓
39.	Active Power	✓
40.	Reactive Power	✓
41.	Apparent Power	✓
42.	Power Factor	✓
43.	Number of Interruptions	✓

# NMID12MBUS

SINGLE-PHASE DIN RAIL ENERGY METER

LUMEL

**Order Code:**

## **NMID12MBUS**

1 Phase Direct Connected AC Energy Meter with Input voltage 193-253VLN, 0.25-5 A (45 A), MBUS, 1 SO Output with CE Certification.

**LUMEL S.A.**  
ul. Słubicka 4,  
65-127 Zielona Góra, Poland  
tel.: +48 68 45 75 100

**Technical support:**  
tel.: (+48 68) 45 75 143, 45 75 141,  
45 75 144, 45 75 140  
e-mail: [export@lumel.com.pl](mailto:export@lumel.com.pl)

**Export department:**  
tel.: (+48 68) 45 75 130,  
45 75 131, 45 75 132  
e-mail: [export@lumel.com.pl](mailto:export@lumel.com.pl)

**Calibration & Attestation:**  
e-mail: [laboratorium@lumel.com.pl](mailto:laboratorium@lumel.com.pl)

[www.lumel.com.pl](http://www.lumel.com.pl)

Follow us

